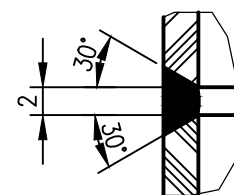
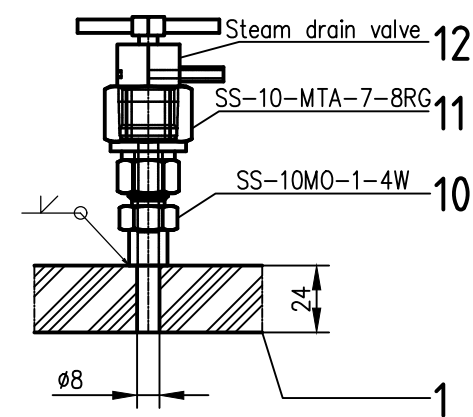


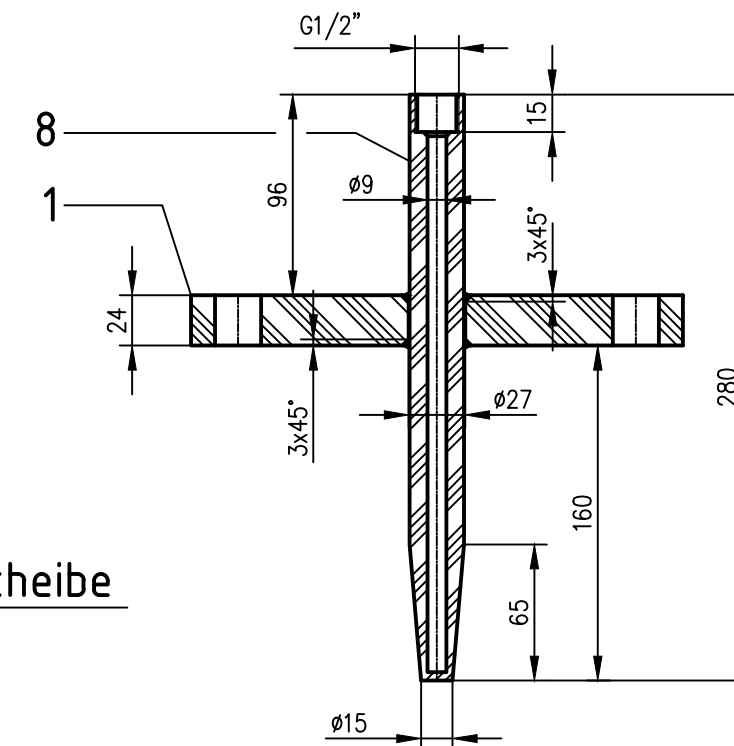
Stutzenstumpverschweißung



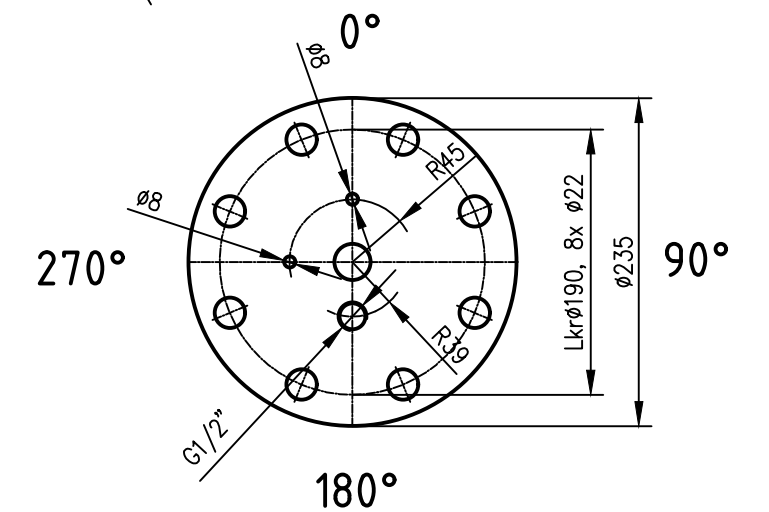
Detail Dampfablassventil



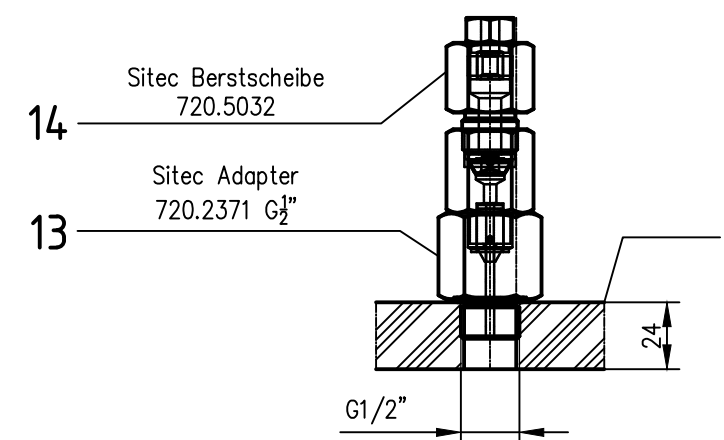
Detail Temperaturhülse



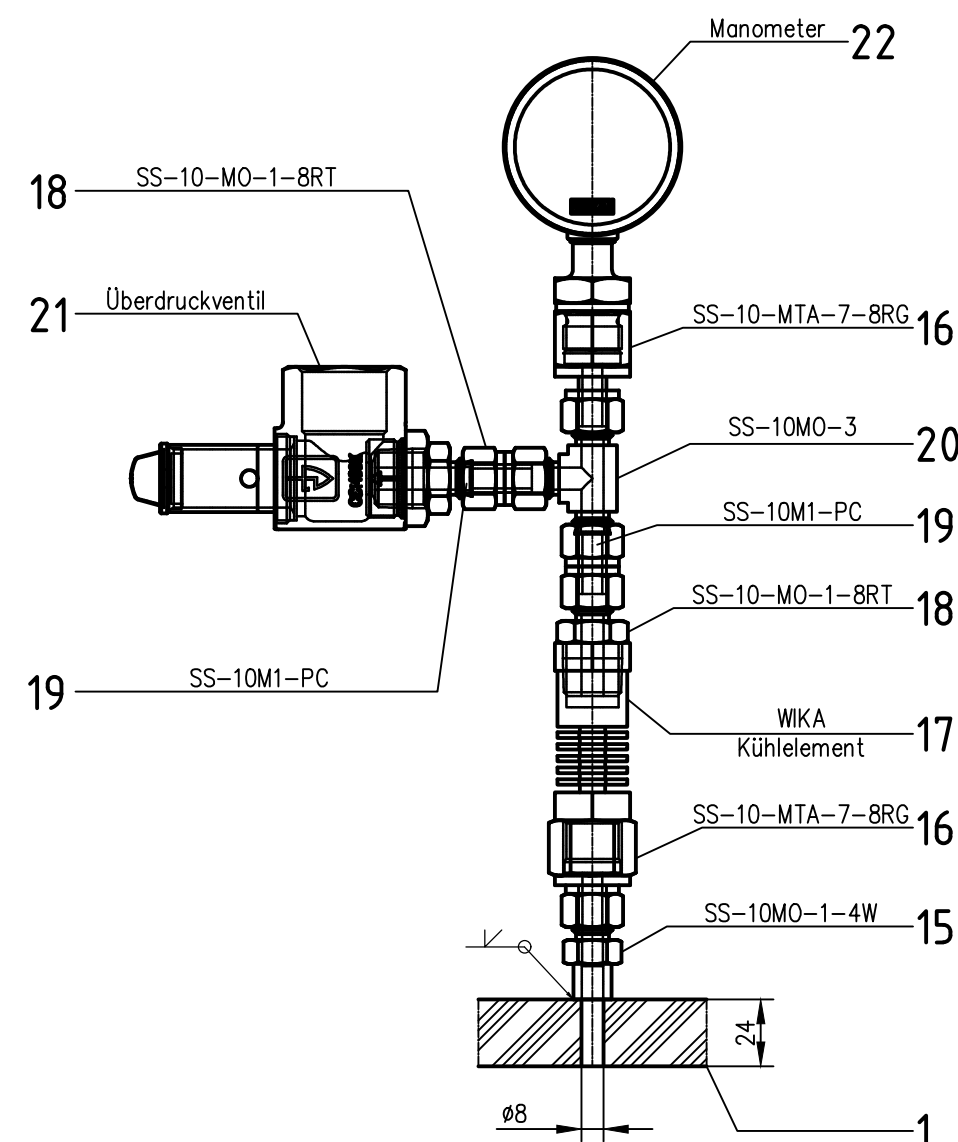
Blindflansch Pos.1



Detail Berstscheibe



Detail Manometer/Überdruckventil

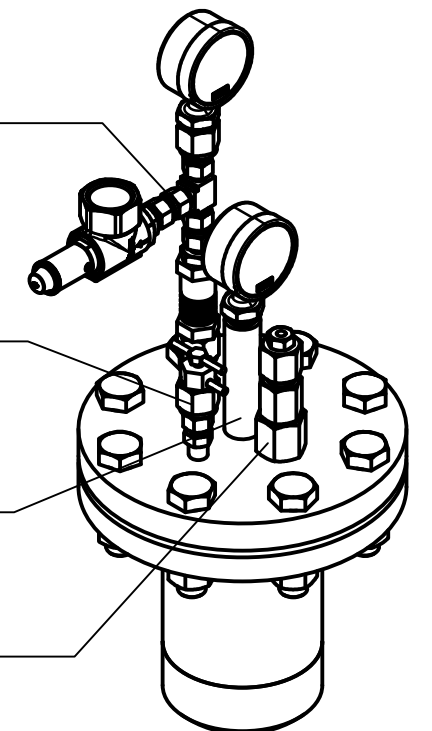


Manometer/Überdruckventil

Dampfablassventil

Thermometer

Berstscheibe



1. Technical data	shell side	tube side
Max. liquid column [m]	-	-
medium	Fäkalien	
Density (liquid / gaseous), max.	1000 kg/m³	
Fluid group according to PED 2014/68 / EU	1 / flüssig	
volume ca. V [l]	2	
Over pressure PS [bar]	+25	
temperature TS [°C]	-10 / +200	
Test pressure standing / lying. PT [bar]	+39,25	
design rule	: EN 13445	
testing basis	: EN 13445, DGRL 2014/68/EU	
empty weigh	: 20 kg	

customer	ZHAW	scale:	1:5
date	2021	Fabr. No.:	B-1733
name		Low-Cost-Reaktor BLR	
Bearb.	28.01	Order number.:	21001.6
Gepr.	02.02.		
Norm	RO		
Observe the protective mark DIN ISO 16016		Drawing No.:	21001.6
BERO Technik AG		Replacement for:	
Zust.	modification	date	name
Origin:		Replacement by:	